

# VENTED TYPE 3R ENCLOSURES

## Application

Designed to house electrical controls, drives, instruments and components used in an outdoor environment to provide a degree of protection for the equipment inside the enclosure against the ingress of solid foreign objects (falling dirt); and provide a degree of protection with respect to the harmful effects on the equipment due to the ingress of water (rain, sleet, snow). For installation information, consult our installation manual at [www.saginawcontrol.com](http://www.saginawcontrol.com).

## Construction

- 0.075" galvanized steel.
- Black quarter turn latches and padlock wing knob.
- Provisions for subpanel.
- Doors open 180 degrees.
- Concealed hinges.
- Vented top hood with removable cover and washable reusable filter
- Top-mounted fans.
- Vented rain hood with filter kits in door.
- Din Rail mounting provisions inside top for installation of thermostat and terminals.
- Pour in place oil and water resistant gasket.
- Ground studs on door and body.
- Mounting holes for optional mounting straps.
- 3/8-16 grounding kit.
- Subpanel mounting hardware included.
- 115 volt fan.
- Provision for Lifting Lugs included on enclosures with Height >48" and with Depth >16". Lifting Lug assembly will be included with the enclosure bolt pack and hole plugs provided to seal holes in bottom of enclosure.

## Finish

White powder coated inside and out. Optional subpanels powder coated white.

## IS7 Industry Standards

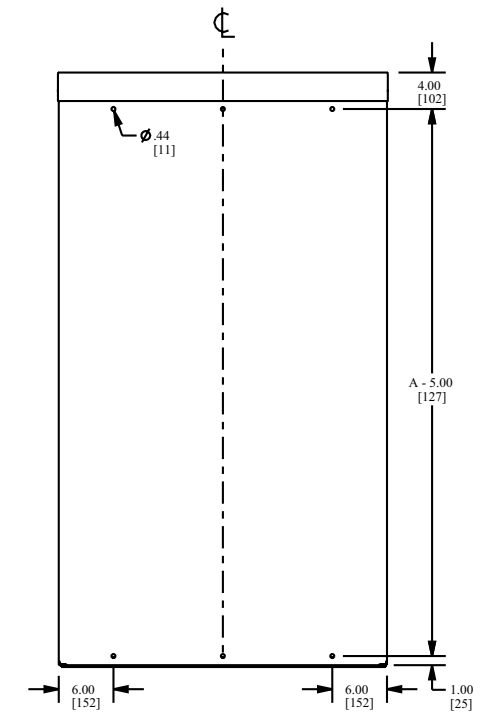
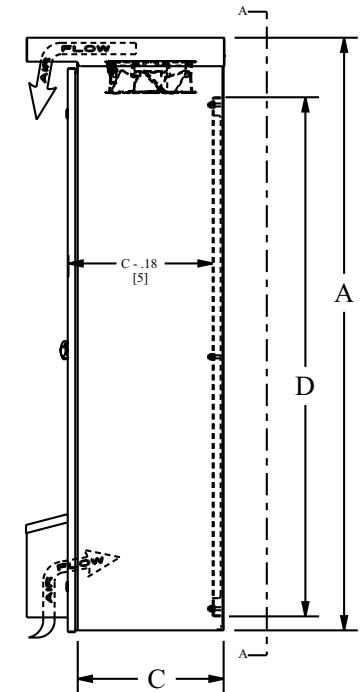
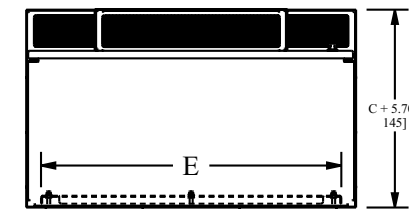
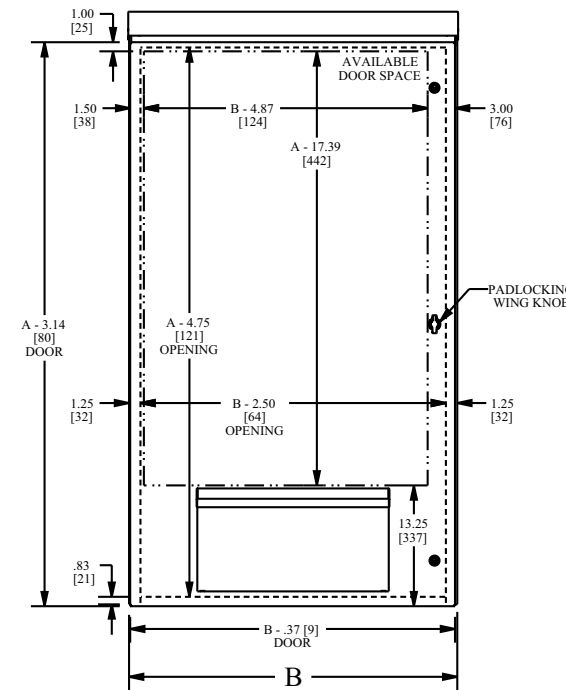
NEMA Type 3R  
UL Listed Type 3R  
CSA Type 3R  
IEC 60529 IP32

Enclosure Product Code N3

Catalog No.	Height (A)	Width (B)	Depth (C)	Fan Size	Fan Qty	System CFM	Filter Size	Filter Qty	Industry Standard	Subpanel
<a href="#">SCE-29VR2412</a>	29.00	24.00	12.00	6"	1	107	FLT66	2	IS7	<a href="#">SCE-24P24</a>
<a href="#">SCE-29VR2416</a>	29.00	24.00	16.00	6"	1	107	FLT66	2	IS7	<a href="#">SCE-24P24</a>
<a href="#">SCE-35VR2412</a>	35.00	24.00	12.00	6"	1	107	FLT66	2	IS7	<a href="#">SCE-30P24</a>
<a href="#">SCE-41VR2412</a>	41.00	24.00	12.00	6"	1	107	FLT66	2	IS7	<a href="#">SCE-36P24</a>
<a href="#">SCE-47VR2414</a>	47.00	24.00	14.00	10"	1	300	FLT66	2	IS7	<a href="#">SCE-42P24</a>
<a href="#">SCE-53VR3616</a>	53.00	36.00	16.00	10"	1	300	FLT88	2	IS7	<a href="#">SCE-48P36</a>
<a href="#">SCE-53VR3620</a>	53.00	36.00	20.00	10"	1	300	FLT88	2	IS7	<a href="#">SCE-48P36</a>
<a href="#">SCE-65VR3616</a>	65.00	36.00	16.00	10"	2	600	FLT88	2	IS7	<a href="#">SCE-60P36</a>
<a href="#">SCE-65VR3620</a>	65.00	36.00	20.00	10"	2	600	FLT88	2	IS7	<a href="#">SCE-60P36</a>



# VENTED TYPE 3R ENCLOSURES TECHNICAL DATA



VIEW A-A